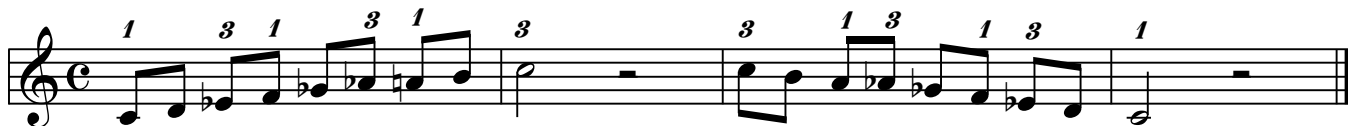
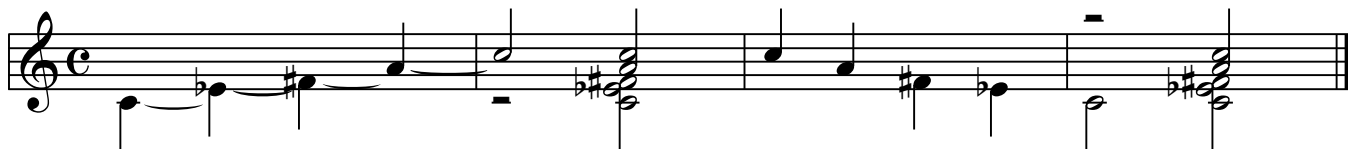


Musicarta - Scale City: Diminished Scales

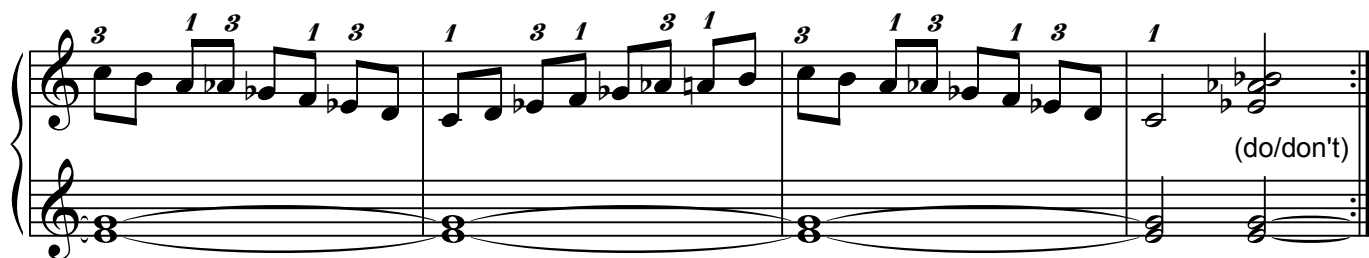
Cdim



W S W S W S W S

S W S W S W S W

C dim - 3 black keys



Ddim

Musical staff for Ddim scale, first system. Treble clef, common time. Notes: D4, E4, F#4, G4, A4, B4, C5, B4, A4, G4, F#4, E4, D4. Chords: Ddim7 (F#4, G4, A4, B4) and Ddim9 (F#4, G4, A4, B4, C5).

Musical staff for Ddim scale, second system. Treble clef, common time. Notes: D4, E4, F#4, G4, A4, B4, C5, B4, A4, G4, F#4, E4, D4. Chords: Ddim7 (F#4, G4, A4, B4) and Ddim9 (F#4, G4, A4, B4, C5). Fingerings: 1 3 1 3 1 3 1 3 1 3 1 3 1.

D dim - 3 black keys

Musical staff for D dim - 3 black keys, first system. Treble clef, common time. Key signature: two flats (Bb, Eb). Notes: D4, Eb4, F4, G4, Ab4, Bb4, C5, Bb4, Ab4, G4, F4, Eb4, D4. Chords: Ddim7 (F4, G4, Ab4, Bb4) and Ddim9 (F4, G4, Ab4, Bb4, C5). Fingerings: 1 3 1 3 1 3 1 3 1 3 1 3 1. Bass clef: C, A. Text: "Do/don't play" and "(do/don't)".

Musical staff for D dim - 3 black keys, second system. Treble clef, common time. Notes: D4, Eb4, F4, G4, Ab4, Bb4, C5, Bb4, Ab4, G4, F4, Eb4, D4. Chords: Ddim7 (F4, G4, Ab4, Bb4) and Ddim9 (F4, G4, Ab4, Bb4, C5). Fingerings: 3 1 3 1 3 1 3 1 3 1 3 1 3. Bass clef: C, A. Text: "(do/don't)".

Musical staff for D dim - 3 black keys, third system. Treble clef, common time. Notes: D4, Eb4, F4, G4, Ab4, Bb4, C5, Bb4, Ab4, G4, F4, Eb4, D4. Chords: Ddim7 (F4, G4, Ab4, Bb4) and Ddim9 (F4, G4, Ab4, Bb4, C5). Fingerings: 1 3 1 3 1 3 1 3 1 3 1 3 1.

Edim

First system of the Edim scale in treble clef, C major key signature. The scale is: E4, F#4, G4, A4, B4, C5, B4, A4, G4, F#4, E4. The notation includes a whole note chord at the end.

Second system of the Edim scale in treble clef, C major key signature. The scale is: E4, F#4, G4, A4, B4, C5, B4, A4, G4, F#4, E4. Fingerings are indicated above the notes: 2 3 1, 3 1, 4, 4, 1 3, 1 3 2.

E dim - 4 black keys

First system of the E dim scale in treble clef, E-flat major key signature (4 black keys). The scale is: E4, F4, G4, A4, B4, C5, B4, A4, G4, F4, E4. Fingerings are indicated above the notes: 2 3 1, 3 1, 4, 1 3, 1 3 2 3 1, 3 1, 4. The first measure contains a whole note chord with the instruction "Do/don't play". The last measure contains a whole note chord with the instruction "(do/don't)".

D
B
F

Second system of the E dim scale in treble clef, E-flat major key signature (4 black keys). The scale is: E4, F4, G4, A4, B4, C5, B4, A4, G4, F4, E4. Fingerings are indicated above the notes: 4, 1 3, 1 3, 2 3 1, 3 1, 3, 4, 1 3, 1 3, 2. The last measure contains a whole note chord with the instruction "(do/don't)".

Third system of the E dim scale in treble clef, E-flat major key signature (4 black keys). The scale is: E4, F4, G4, A4, B4, C5, B4, A4, G4, F4, E4. Fingerings are indicated above the notes: 2 3 1, 3 1, 3, 1 2 1, 3 1, 4, 1 3, 1 2, 1 3, 1 3, 2.

F dim

Two staves of musical notation in C major. The first staff shows the F diminished scale (F, G, A, Bb, C, D, Eb, F) with a fermata over the final F. The second staff shows a fingered scale run starting on F, with fingerings 1, 4, 1, 5, 5, 1, 4, 1.

F dim - 3 black keys

Three systems of piano accompaniment for the F diminished scale. Each system consists of a treble clef staff with a melodic line and a bass clef staff with a bass line. The first system includes the lyrics "Do/don't play" and "(do/don't)". The second system includes the lyrics "(do/don't)". The bass line consists of octaves of the notes C and A. Fingerings 1, 4, 1, 5, 5, 1, 4, 1 are indicated above the notes in the treble staff.

Gdim

Two staves of musical notation for the Gdim scale in treble clef. The first staff shows the scale with a fermata over the final note. The second staff shows the same scale with fingering numbers: 1 3 1 3 1 3 3 1 3 1 3 1.

G dim - 4 black keys

Three systems of musical notation for the G dim - 4 black keys scale in piano. Each system consists of a grand staff (treble and bass clefs). The first system includes the instruction "Do/don't play" and "F B" in the bass clef. The second system includes the instruction "(do/don't)". The third system includes the instruction "(do/don't)". Fingering numbers are provided above the notes in each system.

Bdim

Two staves of musical notation for the Bdim scale in treble clef. The first staff shows the scale notes: B, C, D, E, F, G, A, B. The second staff shows the scale notes with fingering: 1 3 1 1 4 4 1 2 1 3 1.

B dim - 3 black keys

Three systems of musical notation for the B dim - 3 black keys scale in piano. Each system consists of a treble clef staff and a bass clef staff. The first system includes the instruction "Do/don't play" and the notes A and C in the bass staff. The second system includes the instruction "(do/don't)". The third system includes the instruction "(do/don't)". Fingering is indicated above the notes in the treble staff.